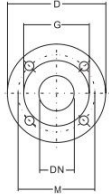
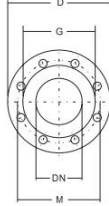


Flange Dimensions



PN16 FLANGES

DN	D	M	G	HOLES N°	∅	MAX. THICKNESS
32	140	100	78	4	18	18
40	150	110	88	4	18	18
50	165	125	102	4	18	20
65	185	145	122	4	18	20

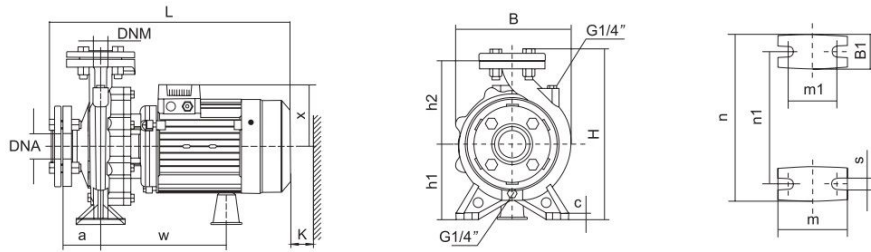


PN16 FLANGES

DN	D	M	G	HOLES N°	∅	MAX. THICKNESS
80	200	160	138	8	18	22
100	220	180	158	8	18	22

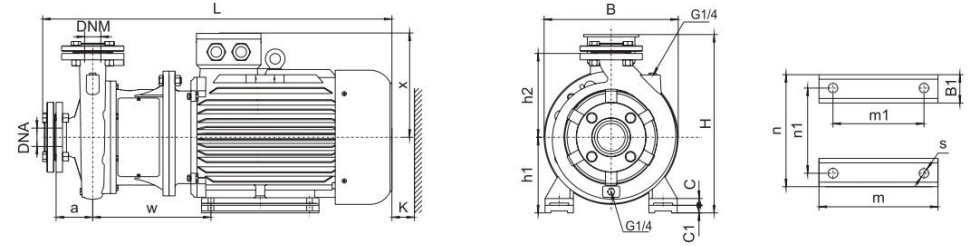
Installation Sketch

up to 7.5 kW included



Installation Sketch

From 7.5 kW



MODEL	DNM	DNA	a	w	x	h2	B1	c	h1	m	m1	n	n1	s	B	H	L	K													
32-125/7	32	50	80	223	113	140	48	12	112	100	70	190	140	15	192	281	427	85													
32-125/11				123	160	50	16	132																							
32-160/15				231	123	160	50	16	132																						
32-160/22				266	141																										
32-160/30				266	141																										
32-200/30			155	264	180	258	127	180	48	12	160	240	190	15	248	369	490	610	60												
32-200/40						258	127	180	48	12	160																				
32-250/55						272	212																								
32-250/75						272	212																								
40-125/11						40	65	80	255	127	140									45		112	100	70	210	160		218	282	489	95
40-125/15	238	127	168	48	12				132																						
40-125/22	238	127	168	48	12				132																						
40-160/30	238	127	168	48	12				132																						
40-160/40	238	127	168	48	12				132																						
40-200/55	100	259	180	259	180			180	50		160	264	212	15	275	370	553	583	105												
40-200/75				259	180			180	50		160																				
50-125/22				50	65			100	262	127	160									50		132	100	70	240	190		243	322	518	110
50-125/30									262	127	160									50		132									
50-125/40									262	127	160									50		132									
50-160/55	262	180	180			52			160	264	212	272	370	558	586																
50-160/75	262	180	180			52			160	264	212	272	370	558	586																
65-125/40	65	80	100			265	180	180	68	14	160	125	95	280	212		283	372	564	120											
65-125/55						265	180	180	68	14	160	125	95	280	212		283	372	564												
65-125/75						265	180	180	68	14	160	125	95	280	212		283	372	564												
65-125/75						265	180	180	68	14	160	125	95	280	212		283	372	594												

MODEL	DNM	DNA	a	w	x	h2	B1	C	C1	h1	m	m1	n	n1	s	B	H	L	K														
40-250/92	40	65	100	310	260	225	65	20	20	180	260	210	320	254	14.5	350	440	845	110														
40-250/110						225	65	20	20	180	260	210	320	254																			
40-250/150						225	65	20	20	180	260	210	320	254																			
50-200/92	50	65	100	310	260	200	65	20	20	160	260	210	320	254	14.5	350	420	845	120														
50-200/110						225														70	25	-	180	304	254	355	279	440	895	110			
50-250/150						225														70	25	-	180	304	254	355	279	440	895	110			
50-250/185						225														70	25	-	180	304	254	355	279	440	895	110			
50-250/220						225														70	25	-	180	304	254	355	279	440	895	110			
65-160/92				65	80	100	310	260	200	65	20	20	160	260	210	320	254	14.5	350	420	845	125											
65-160/110									225														70	22	-	180	311	241	355	279	455	925	110
65-160/150									225														70	22	-	180	311	241	355	279	455	925	110
65-160/150									225														70	22	-	180	311	241	355	279	455	925	110
65-200/150									225														70	22	-	180	311	241	355	279	455	925	110
65-200/185	225	70	22				-	180	311	241	355	279	455	925	110																		
65-200/220	225	70	22				-	180	311	241	355	279	455	925	110																		
65-200K/185	225	70	22				-	180	311	241	355	279	455	925	110																		
65-200K/220	225	70	22				-	180	311	241	355	279	455	925	110																		
65-200K/300	225	70	22				-	180	311	241	355	279	455	925	110																		
65-250/220	80	100	125	315	260	225	65	20	20	160	260	210	320	254	14.5	350	420	870	130														
80-160/110						225														70	22	-	180	304	254	355	279	455	925	110			
80-160/150						225														70	22	-	180	304	254	355	279	455	925	110			
80-160/185						225														70	22	-	180	304	254	355	279	455	925	110			
80-200/220						225														70	22	-	180	304	254	355	279	455	925	110			
80-200/300				225	70	22	-	180	304	254	355	279	455	925	110																		
80-250/370				225	70	22	-	180	304	254	355	279	455	925	110																		
80-250/450				225	70	22	-	180	304	254	355	279	455	925	110																		
80-250/550				225	70	22	-	180	304	254	355	279	455	925	110																		
80-250/550				225	70	22	-	180	304	254	355	279	455	925	110																		

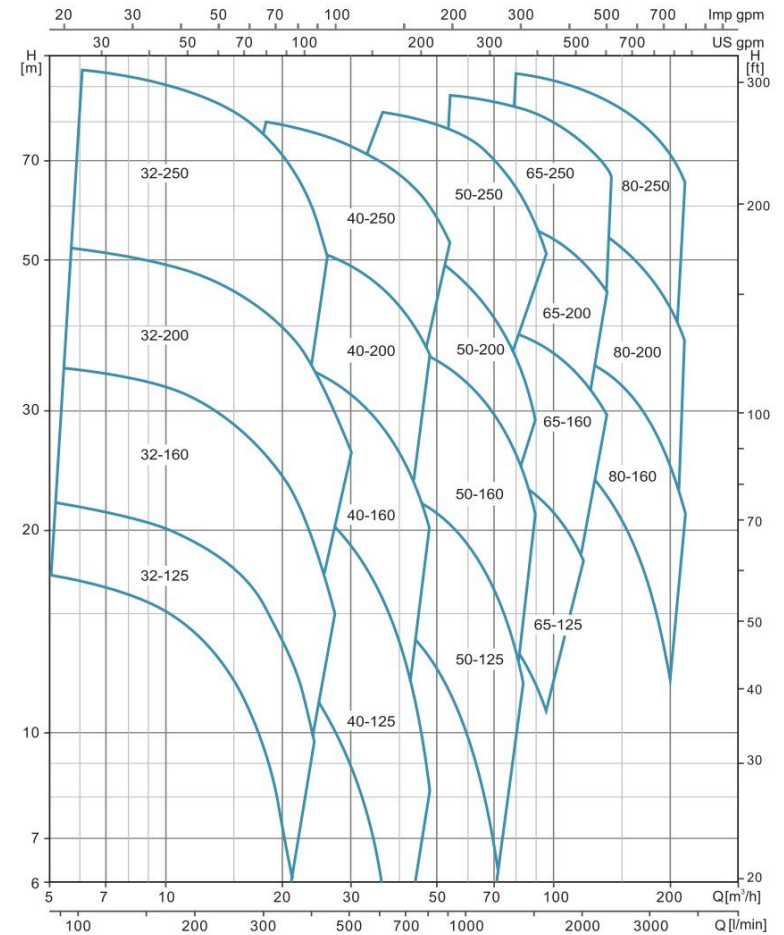
Technical Data

PUMP TYPE	POWER kW	HP	l/min	Q=DELIVERY																				
				0	100	150	250	300	400	450	600	700	800	900	1200	1400	1500	1800	2000	2300	3000	3500		
32-125/07★	0.75	1	17.5	16.7	15	12	9																	
32-125/11★	1.1	1.5	22	21	19.7	16.5	14.5	9																
32-160/15★	1.5	2	25.4	23.7	22.5	18.5	15.8																	
32-160/22★	2.2	3	31	29.6	28.5	24.5	22	15																
32-160/30★	3	4	35	34.3	34	28	25.5	19	15															
32-200/30★	3	4	44.2	43	39.8	35.2	32.2	24.6	19.8															
32-200/40★	4	5.5	54.5	52	50	45.5	41.9	35	30.3															
32-250/55★	5.5	7.5	79.5	74.7	71.8	63	56	37.5																
32-250/75★	7.5	10	99.5	95	91.8	83	76	57.8																
40-125/11	1.1	1.5	14.7				13.5	11.5	10.1	5.8														
40-125/15	1.5	2	18.1				17	15	13.9	9.6	6													
40-125/22	2.2	3	24.5				23.2	21.5	20.2	16	13	8.3												
40-160/30	3	4	31.8				29.5	27.5	26.3	21.5	17.5													
40-160/40	4	5.5	38				36	34	33	28.5	25	20.1												
40-200/55★	5.5	7.5	46				43.8	41.3	40.1	35	30													
40-200/75★	7.5	10	57				53.6	51.5	50	45	41	36.5												
40-250/92★	9.2	12.5	64				59	56.5	55	49.5	45	39.8												
40-250/110★	11	15	72				67.5	65	63.5	57.5	52.2	47												
40-250/150★	15	20	84.5				80	77.3	75.2	71	65	61												
50-125/22	2.2	3	17				15.4	14	12.8	11.5	6.5													
50-125/30	3	4	20				18.8	18	17	15.6	11													
50-125/40	4	5.5	24				23.1	23	21.5	20.3	15.8	11.8												
50-160/55	5.5	7.5	32				30.6	30	28	26.6	20.5	14.8												
50-160/75	7.5	10	40				38	37	36	34.4	29	24	21											
50-200/92★	9.2	12.5	50.5				46.8	45	43	40.9	32.5	25.7												
50-200/110★	11	15	57.5				53.5	52	50	47.5	40	33	29											
50-250/150★	15	20	68.5				64	63	61.5	59	50	41												
50-250/185★	18.5	25	77				73.2	72	70	68	60.5	51.5	47											
50-250/220★	22	30	86.3				83	81.5	80.8	78.7	70	61.9	57											
65-125/40	4	5.5	19				17.3	16.8	14.5	13	11.8													
65-125/55	5.5	7.5	23				21.3	20.9	19	17.5	16.7	13.7												
65-125/75	7.5	10	27				26	25.6	24.5	23	22.5	20	18											
65-160/92	9.2	12.5	33				31.5	30	28	27.1	24	21.5												
65-160/110	11	15	36				34.5	33	31.5	30.8	28	25.5												
65-160/150	15	20	42				41	40	38.5	37.8	35	33	29.5											
65-200/150	15	20	45.5				46	43.5	41	39.2	33													
65-200/185	18.5	25	53				53.5	51.2	48.3	47	41.5													
65-200/220	22	30	59				59.5	57.2	54	53	47	43.5												
65-200K/185	18.5	25	41.2				42	41.2	40.6	38.2	36.5	34												
65-200K/220	22	30	48				48	47.5	46	44	41													
65-200K/300	30	40	59.5				59	58.5	58	56.2	54													
65-250/220	22	30	62				61.5	58.2	56.5	54	49	45												
65-250/300	30	40	76				75	73	71.5	69.5	64.5	61.5	54											
65-250/370	37	50	90				88.3	86.5	84	83	78	75	68											
80-160/110	11	15	27				27.3	26	24.5	22.5	16													
80-160/150	15	20	32.8				32.5	31.3	30.2	28.5	22.1	16.7												
80-160/185	18.5	25	39				38	36.8	36.7	33.8	28.8	23.5												
80-200/220	22	30	48				47.5	45.5	43.5	41	32.5	24.5												
80-200/300	30	45	60				59.5	58	57	54.5	47	40.5												
80-250/370	37	50	71.5				70.5	67.5	65.5	61.5	49.5	38.5												
80-250/450	45	61	80				80.5	78.5	76.5	73.4	63.2	51												
80-250/550	55	75	92.5				93.5	91.2	89.8	86.8	77.6	68.3												

★ = Stainless steel impeller

Characteristic Curves

XST	~2900rpm	ISO 9906 Annex A
-----	----------	------------------



Hydraulic Performance Curves

XST80-250	~2900rpm	ISO 9906 Annex A
------------------	-----------------	-------------------------

